

5 59 089 0

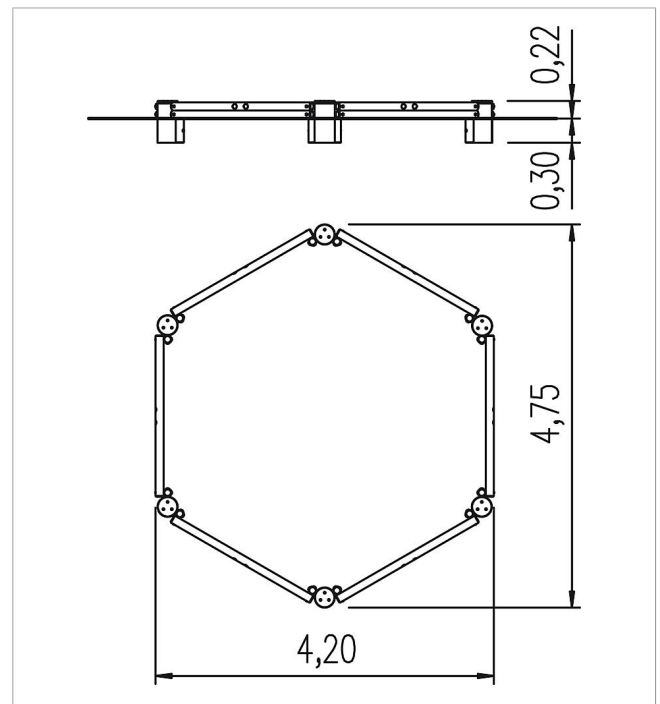
Basis Palisade sandpit, hexagon


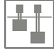





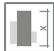

made in germany



Scope of delivery

6x side elements: SW
6x corner bollards: SW



	Material	SW pi
	Foundation level	-
	Minimum space	420x475x200 cm
	Free falling height	20 cm
	Impact protection net	-
	Foundations	-
	Assembly	2 persons/2 h
	Largest section	200x50x20 cm
	Heaviest section	25 kg