

5 45 016 0530 6

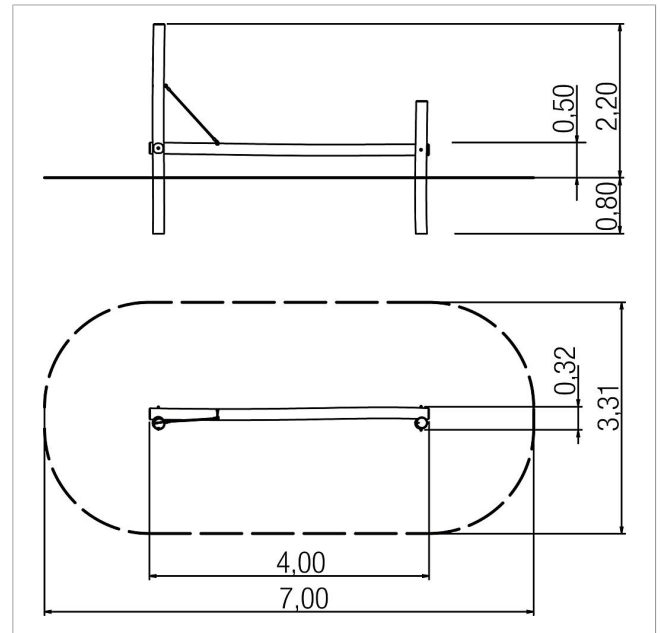
paradiso balance beam Oswin


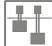







made in germany



Scope of delivery

- 2x posts: robinia
- 1x balancing beam: robinia
- 1x climbing aid: plastic-coated steel cable



	Material	Robinia oiled
	Foundation level	FL 3
	Minimum space	700x330x300 cm
	Free falling height	50 cm
	Impact protection net	21,5 m ²
	Foundations	2x CF
	Assembly	-
	Largest section	400xØ 20 cm
	Heaviest section	120 kg