

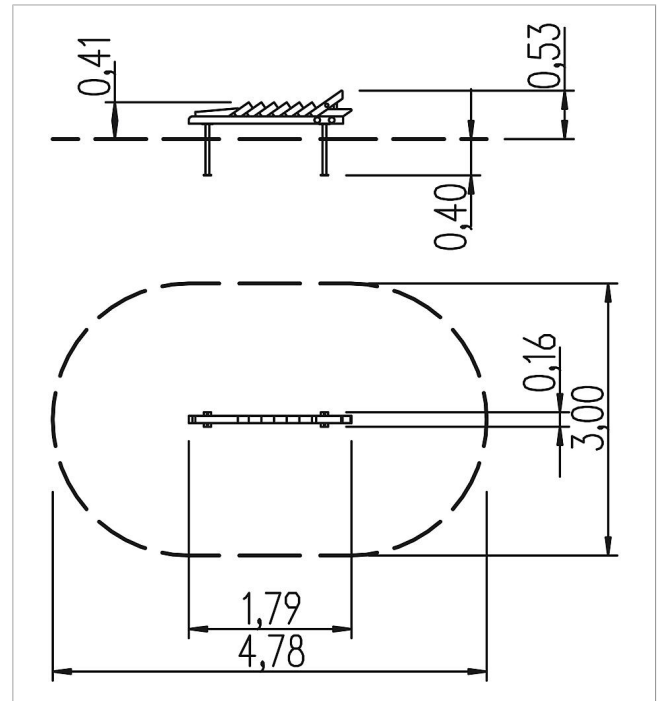
5 10 021 0110 0


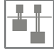





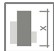

**playo balancing
station
Terracocodrillo**
made in germany



Scope of delivery

1x balancing crocodile: SW
set of post shoes: galvanised steel



	Material	SW pi
	Foundation level	FL 1
	Minimum space	478x300x233 cm
	Free falling height	53 cm
	Impact protection net	-
	Foundations	2x CF or 2x PFs
	Assembly	1 person/1.5 h
	Largest section	179x35x8 cm
	Heaviest section	50 kg