

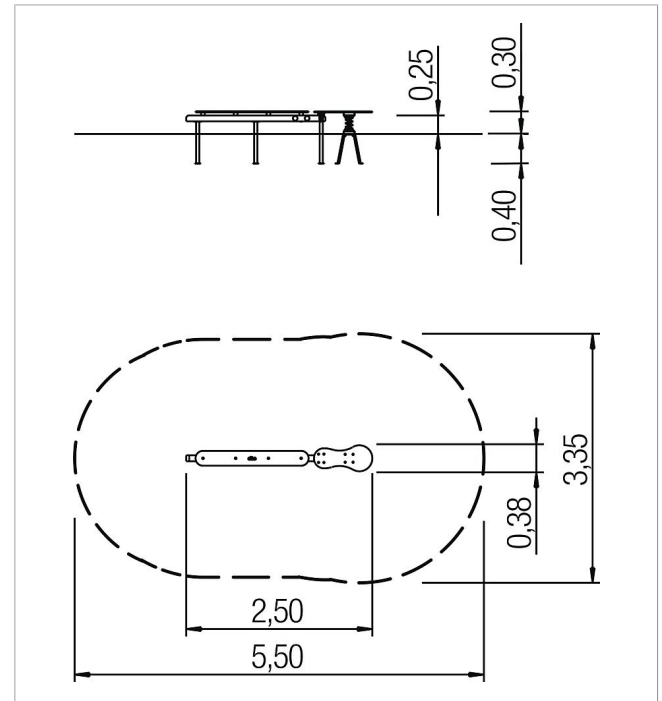
5 10 025 0110 0


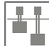





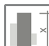

**playo balancing station**  
**Terratrampolino**  
made in germany



**Scope of delivery**

- 1x balancing boards with rubber supports: SW, HPL
- 1x diving board with spring: HPL
- set of post shoes: galvanised steel



	Material	SW pi
	Foundation level	FL 1
	Minimum space	550x335x210 cm
	Free falling height	30 cm
	Impact protection net	9,0 m <sup>2</sup>
	Foundations	3x CF or 5x PFs
	Assembly	1 person/2 h
	Largest section	187x8x8 cm
	Heaviest section	20 kg