

5 25 012 0710 0

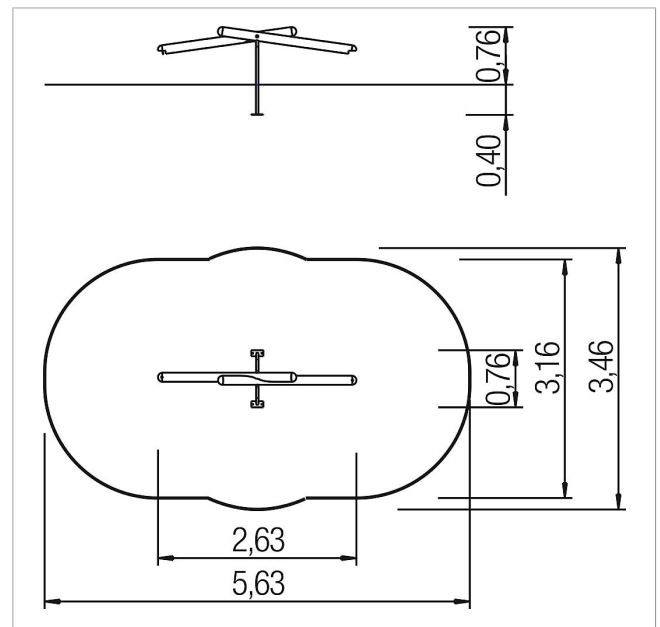
## active trail beam wave M6








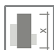

made in germany



### Scope of delivery

1x beam shaft with stand base: hardwood oiled, galvanised steel



	Material	Eucalyptus
	Foundation level	FL 1
	Minimum space	563x346x256 cm
	Free falling height	76 cm
	Impact protection net	12,0 m <sup>2</sup>
	Foundations	2x CF
	Assembly	1 person/2 h
	Largest section	Ø 12x185 cm
	Heaviest section	19 kg