



5 55 021 0410 0

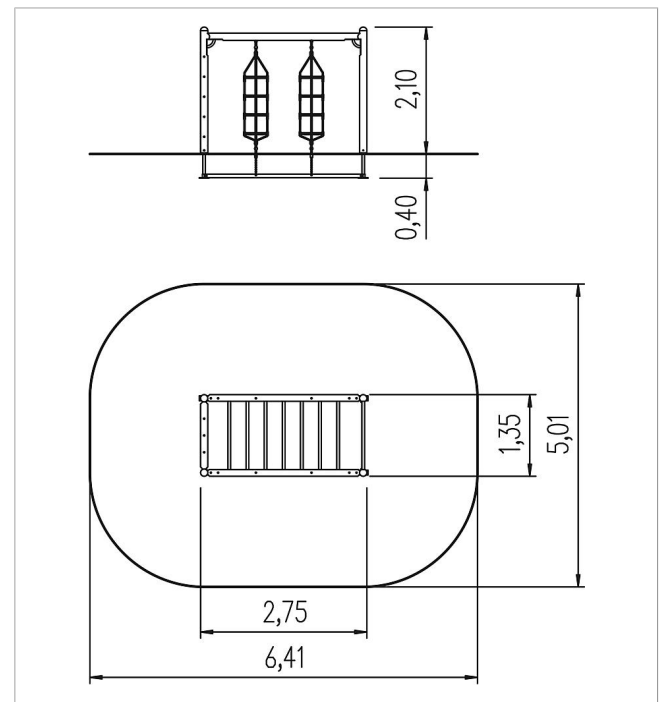
## unique climbing frame 210


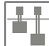





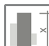

made in germany



### Scope of delivery

2x rung elements: SW, ash  
 1x climbing net: polyester-coated steel cable  
 2x climbing ropes: polyester-coated steel cable  
 2x swing ladders: polyester-coated steel cable, polyethylene  
 wood construction H 200 cm: SW  
 post shoes: galvanised steel



|   |                       |                     |
|---|-----------------------|---------------------|
|  | Material              | Larch               |
|  | Foundation level      | FL 1                |
|  | Minimum space         | 641x501x380 cm      |
|  | Free falling height   | 200 cm              |
|  | Impact protection net | 29,5 m <sup>2</sup> |
|  | Foundations           | 4x CF or 4x PFs     |
|  | Assembly              | 2 persons/3 h       |
|  | Largest section       | 250x139x14 cm       |
|  | Heaviest section      | 120 kg              |