



5 55 125 0410 0

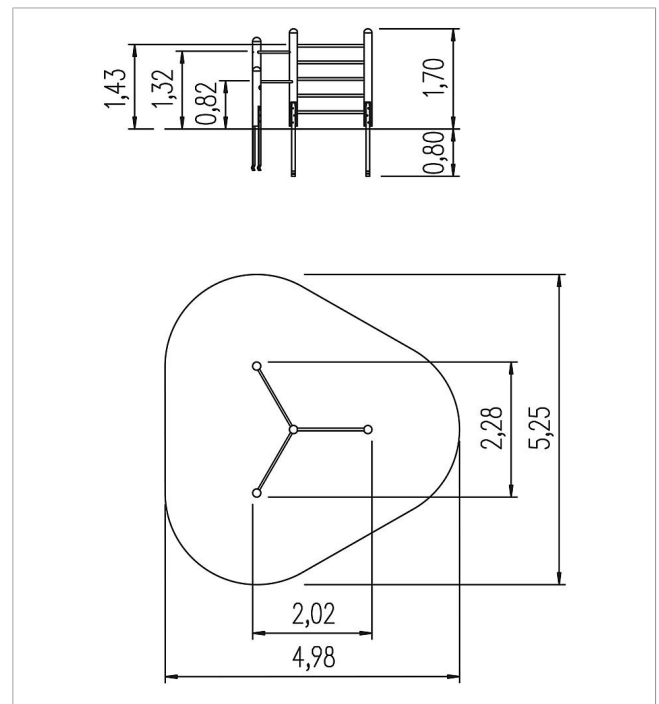
unique climbing frame
with double horizontal
bars

made in germany



Scope of delivery

- 1x rung element: SW, ash
- 2x posts: SW
- 2x horizontal bars: stainless steel
- post shoes: galvanised steel



	Material	Larch
	Foundation level	FL 3
	Minimum space	517x498x323 cm
	Free falling height	143 cm
	Impact protection net	18,5 m ²
	Foundations	4x CF
	Assembly	1 person/2 h
	Largest section	250x140x14 cm
	Heaviest section	70 kg