

5 67 017 0

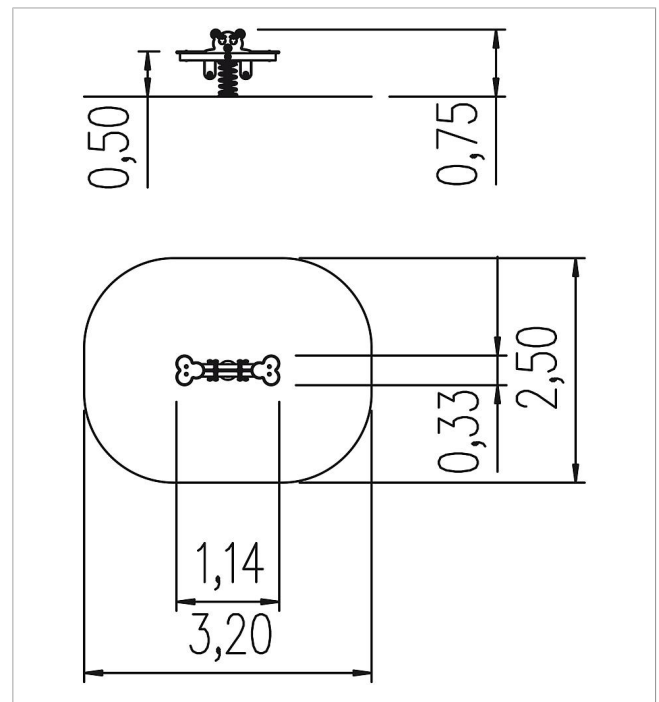
Basis Double spring rocker Bear


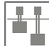





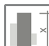

made in germany



Scope of delivery

1x spring see-saw-body: SW, PE
1x spring: spring steel



	Material	SW pi, PE
	Foundation level	FL 3
	Minimum space	320x250x230 cm
	Free falling height	50 cm
	Impact protection net	7,5 m ²
	Foundations	1x 5632280 + 1x CF
	Assembly	2 persons/1 h
	Largest section	115x35x30 cm
	Heaviest section	15 kg