



5 25 030 0410 6

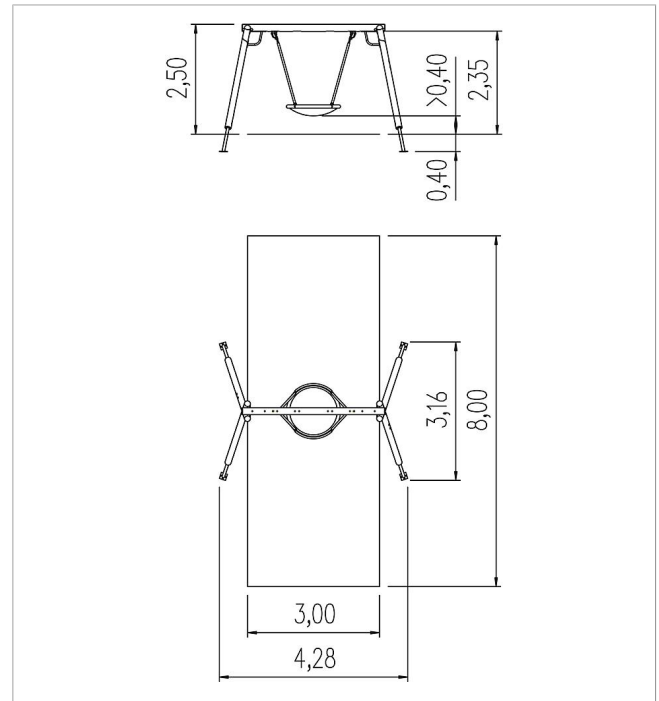
unique double swing Eagle with nest seat


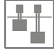





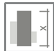

made in germany



Scope of delivery

- 1x swing frame: SW, galvanised steel
- 1x nest swing Ø 120 cm: rope ring, steel cable-link mat, rubber fabric over chain suspension
- 2x cardan joints: galvanised steel
- post shoes: steel galvanised steel



	Material	Larch GL green, Larch
	Foundation level	FL 1
	Minimum space	800x428x380 cm
	Free falling height	149 cm
	Impact protection net	24,0 m ²
	Foundations	4x CF or 4x PFs + 4x CF
	Assembly	2 persons/3 h
	Largest section	338xØ 14 cm
	Heaviest section	30 kg