



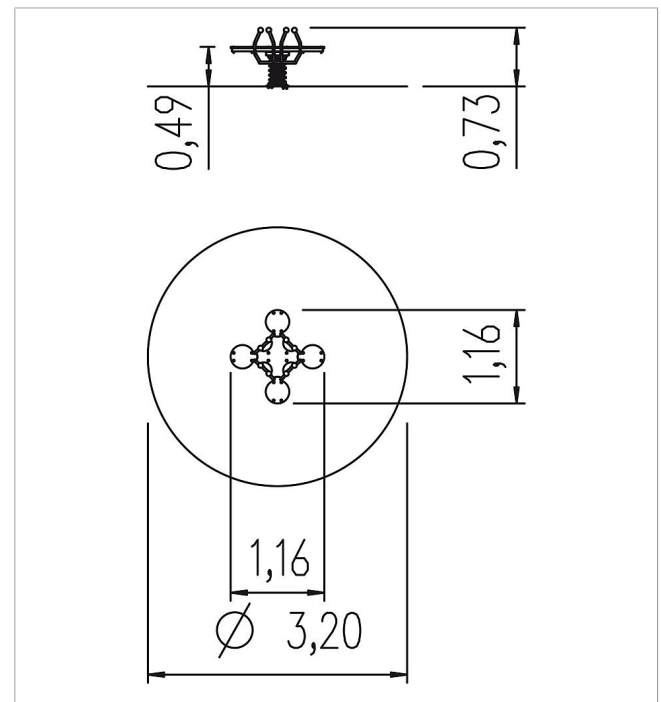
5 55 241 0


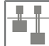






**Basis Four-seater
spring rocker Beetle
Quartet**
made in germany



Scope of delivery

- 1x spring see-saw-body: powder-coated steel
- 4x seats: HPL
- 1x cover: HPL
- 1x spring: spring steel



	Material	Steel, HPL
	Foundation level	FL 1
	Minimum space	Ø 320x229 cm
	Free falling height	49 cm
	Impact protection net	8,5 m ²
	Foundations	1x 5591600 + 1x CF or 1x 5632100 + 1x CF
	Assembly	2 persons/1 h
	Largest section	113x113x45 cm
	Heaviest section	20 kg