



5 55 362 025

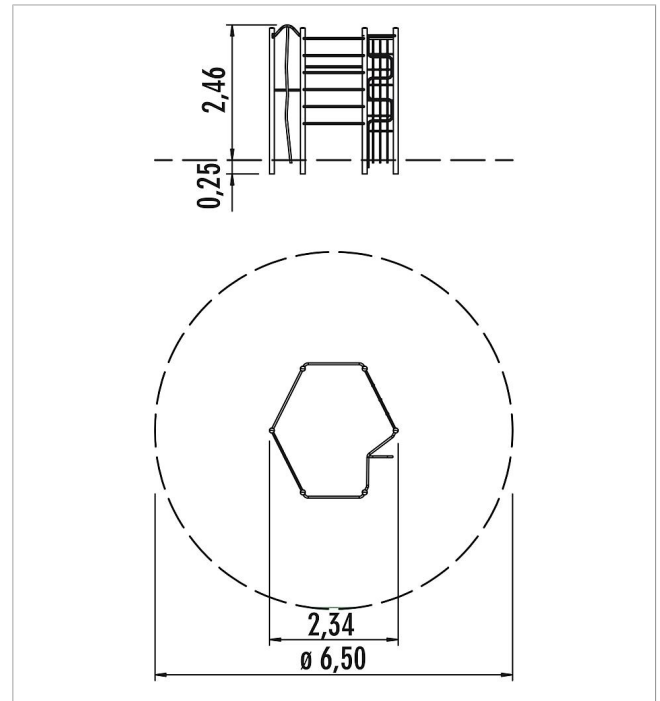
unique hexagonal unit


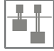





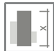

made in germany



### Scope of delivery

- 6x posts: steel galvanised and powder-coated
- 1x climbing net: polycoated steel cable
- 1x rung element: stainless steel
- 2x horizontal bar: stainless steel
- 1x climbing rope: plastic-coated steel cable
- 1x spiral climbing rod: stainless steel



	Material	Steel powder. grey
	Foundation level	FL 3
	Minimum space	ø 650x400 cm
	Free falling height	220 cm
	Impact protection net	21,0 m <sup>2</sup>
	Foundations	6x CF
	Assembly	2 persons/4 h
	Largest section	300x120x10 cm
	Heaviest section	80 kg