

5 25 016 1910 0

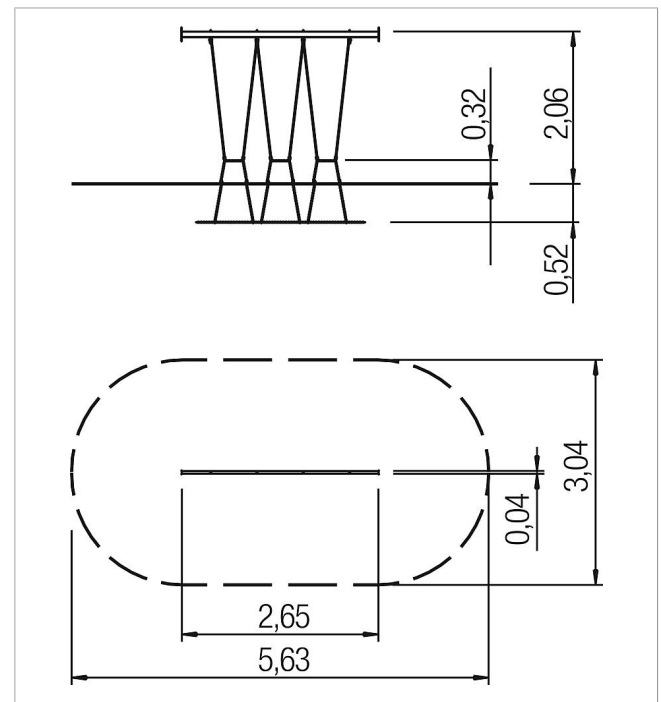
active trail liane crossing S4


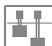







made in germany



Scope of delivery

1x liana path: plastic-coated steel cable, stainless steel



	Material	PP steel cable
	Foundation level	FL 1
	Minimum space	563x304x212 cm
	Free falling height	32 cm
	Impact protection net	-
	Foundations	2x CF
	Assembly	2 persons/3 h
	Largest section	4x8x265 cm
	Heaviest section	18 kg