

5 25 004 0700 0

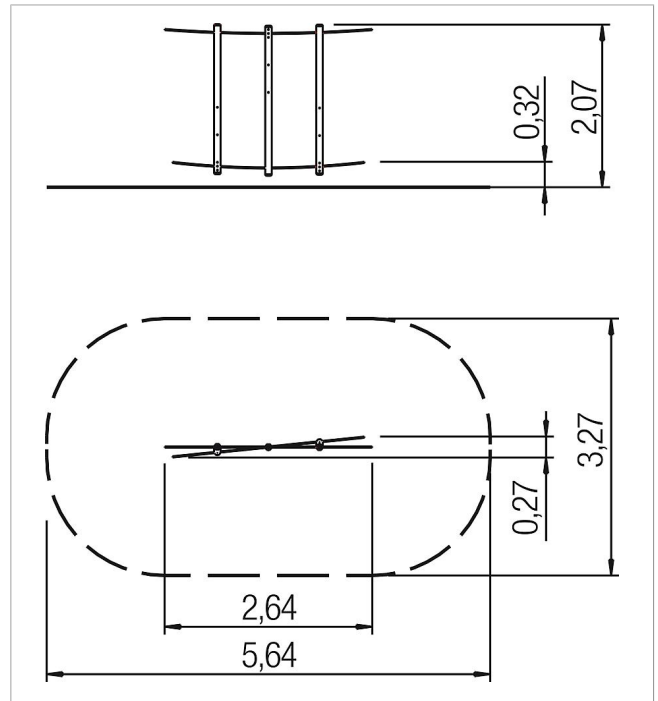
active trail ropes & posts crossing L4


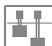







made in germany



### Scope of delivery

1x rope beams pre-installed: hardwood oiled, plastic-coated steel cable



	Material	Eucalyptus
	Foundation level	-
	Minimum space	564x327x214 cm
	Free falling height	32 cm
	Impact protection net	-
	Foundations	-
	Assembly	2 persons/1 h
	Largest section	-
	Heaviest section	28 kg