

5 55 121 5

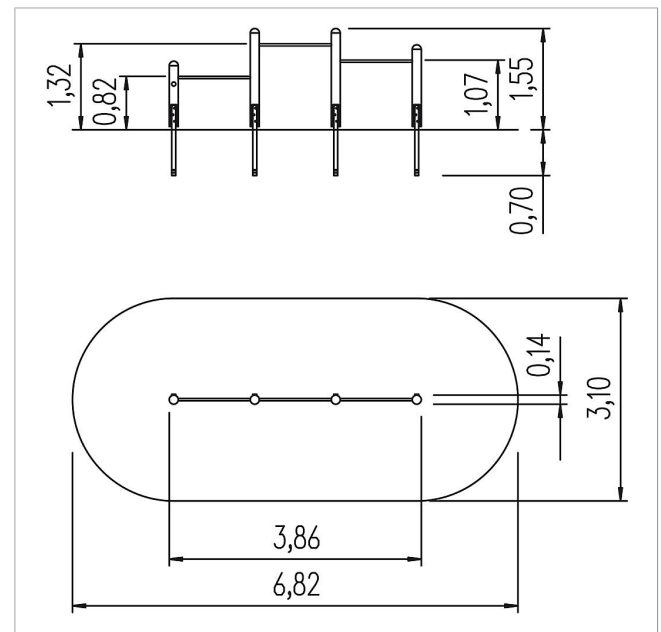
## unique three-level horizontal bars


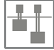







made in germany



### Scope of delivery

4x posts: SW  
3x horizontal bars: stainless steel  
post shoes: galvanised steel



	Material	SW pi
	Foundation level	FL 3
	Minimum space	661x310x312 cm
	Free falling height	132 cm
	Impact protection net	17,5 m <sup>2</sup>
	Foundations	4x CF
	Assembly	1 person/1.5 h
	Largest section	150xØ 12 cm
	Heaviest section	15 kg