

5 55 120 0410 0

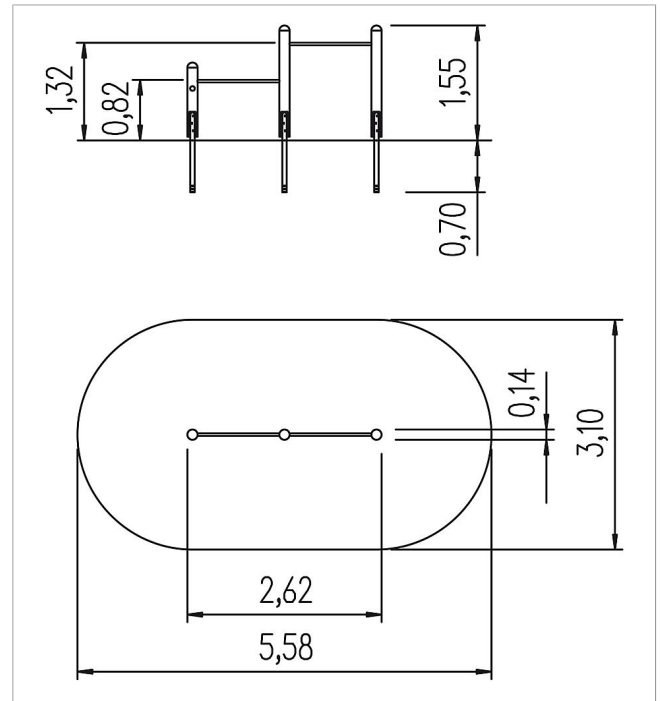
unique two-level  
horizontal bars










made in germany



### Scope of delivery

3 posts: SW  
2 horizontal bars: stainless steel  
post shoes: galvanised steel



	Material	Larch
	Foundation level	FL 3
	Minimum space	544x310x312 cm
	Free falling height	132 cm
	Impact protection net	14,0 m <sup>2</sup>
	Foundations	3x CF
	Assembly	1 person/1 h
	Largest section	150xØ 12 cm
	Heaviest section	15 kg