

5 55 090 0430 0

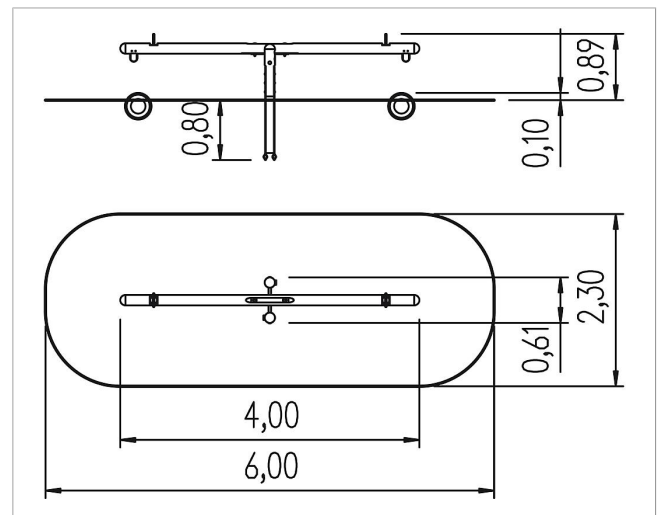
unique two-seater  
seesaw










made in germany



### Scope of delivery

1x see-saw beam: SW  
2x see-saw posts: SW  
2x handle: stainless steel  
2x tyres: rubber  
post shoes: galvanised steel



	Material	Larch
	Foundation level	FL 3
	Minimum space	600x230x290 cm
	Free falling height	110 cm
	Impact protection net	13,0 m <sup>2</sup>
	Foundations	1x CF
	Assembly	2 persons/2 h
	Largest section	400xØ 16 cm
	Heaviest section	60 kg