

5 25 015 0700 0

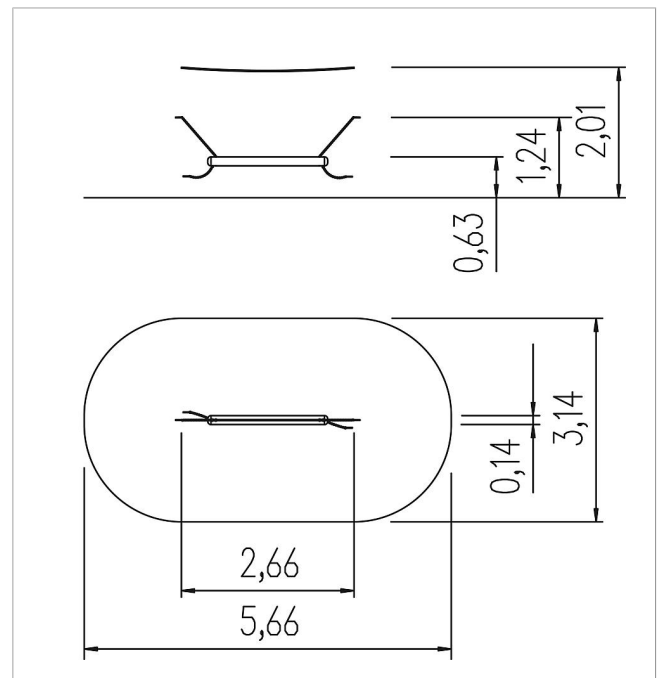
active trail wobbly beam S3


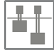



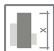

made in germany



Scope of delivery

- 1x wobble beam: hardwood oiled, stainless steel
- 1x holding rope: plastic-coated steel cable



	Material	Eucalyptus
	Foundation level	-
	Minimum space	566x314x243 cm
	Free falling height	63 cm
	Impact protection net	13,5 m ²
	Foundations	-
	Assembly	2 persons/1 h
	Largest section	Ø 14x185 cm
	Heaviest section	26 kg