

5 25 002 0710 0

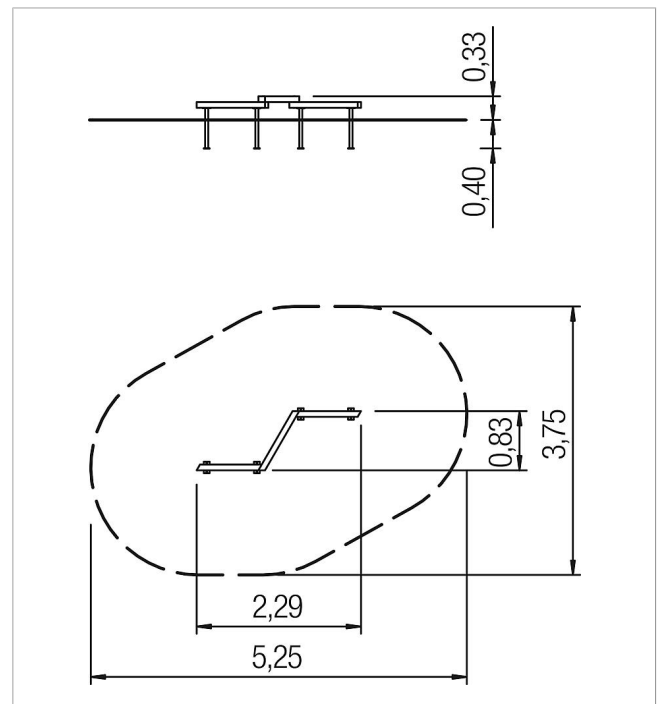
active trail zigzag
beam L2


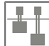





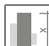

made in germany



Scope of delivery

1x zigzag beam hardwood oiled
post shoe: galvanised steel



	Material	Eucalyptus
	Foundation level	FL 1
	Minimum space	525x375x213 cm
	Free falling height	37 cm
	Impact protection net	-
	Foundations	2x CF
	Assembly	1 person/1.5 h
	Largest section	8x8x100 cm
	Heaviest section	6 kg